

# THE LONDON RESORT

## The London Resort Development Consent Order

BC080001

### Environmental Statement Volume 3: Figures

#### Figure 16.8 – Nearby Monitoring Sites

Document reference: 6.3.16.8

Revision: 00

December 2020

Planning Act 2008

The Infrastructure Planning (Applications: Prescribed Forms and Procedure) Regulations 2009

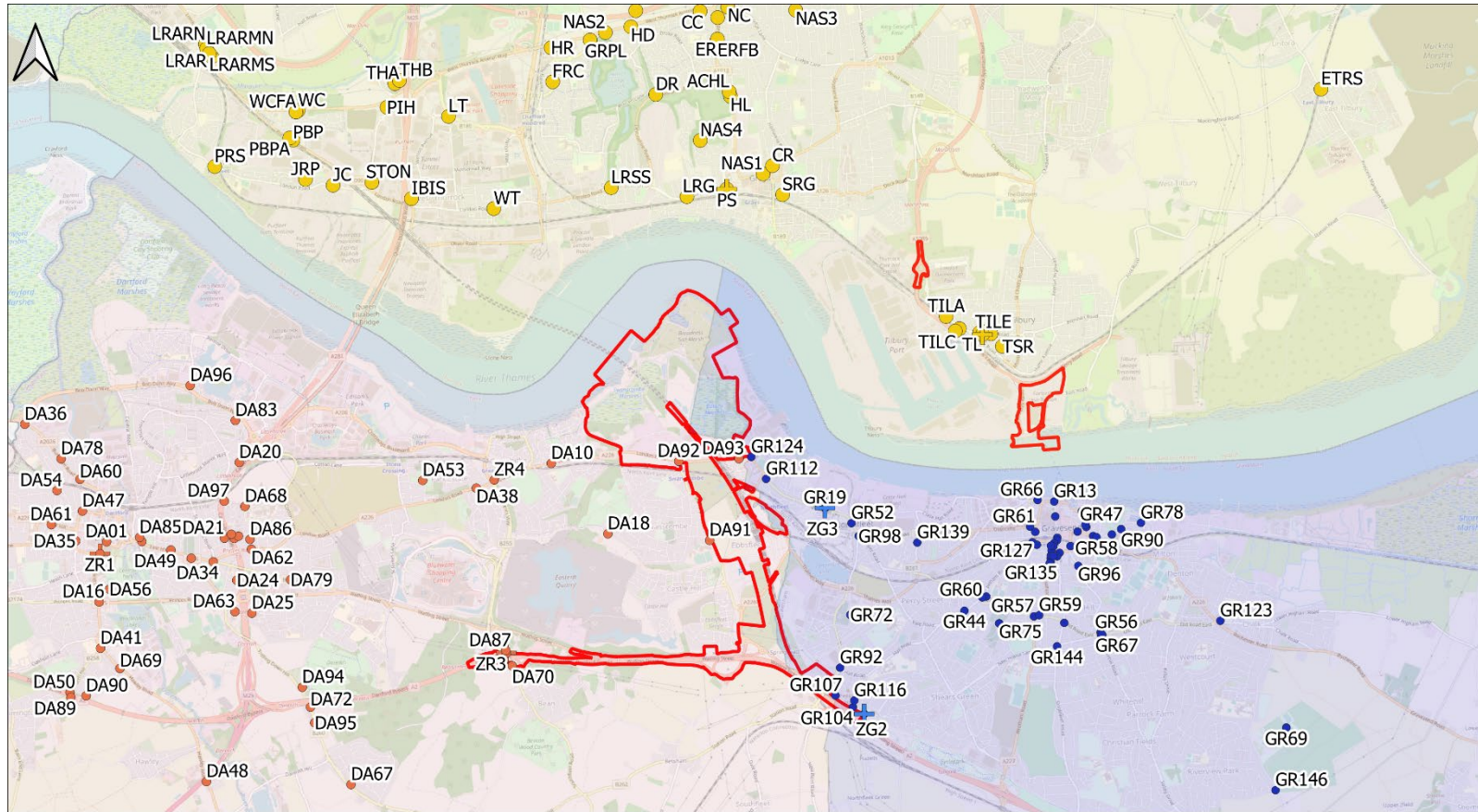
Regulation 5(2)(a)

The Infrastructure Planning (Environmental Impact Assessment) Regulations 2017

Regulation 12(1)

[This page is intentionally left blank]

Figure 16.8 Nearby Monitoring Sites



Key

- Order Limits Local Authority
- Monitoring Sites
  - Dartford
  - Thurrock
  - Gravesham
  - Dartford District (B)
  - Gravesham District (B)
  - Thurrock (B)

